

Archive_of_European_Culture



Landshut_DE



>>Initiate//: early 2021 the European Union funded an initiative to digitise our European cultural heritage. This project aims to be its physical archive. Situated near the future geographical centre of the EU and in the digital epicentre of Bavaria, Landshut is the perfect location. In an effort to revitalise an old prison without altering its internal structure, cells are rethought as server rooms for data storage - cultural heritage has never been kept safer. A canopy interiorises the courtyard of the prison into a public ground floor with various amenities, connecting to the nearby park which will be used to preserve the cultural manifestations that can't be digitised - traditions, craftsmanship & cuisine. Landshut is set to become the epicentre of European culture, displaying what define(d/s) the EU.

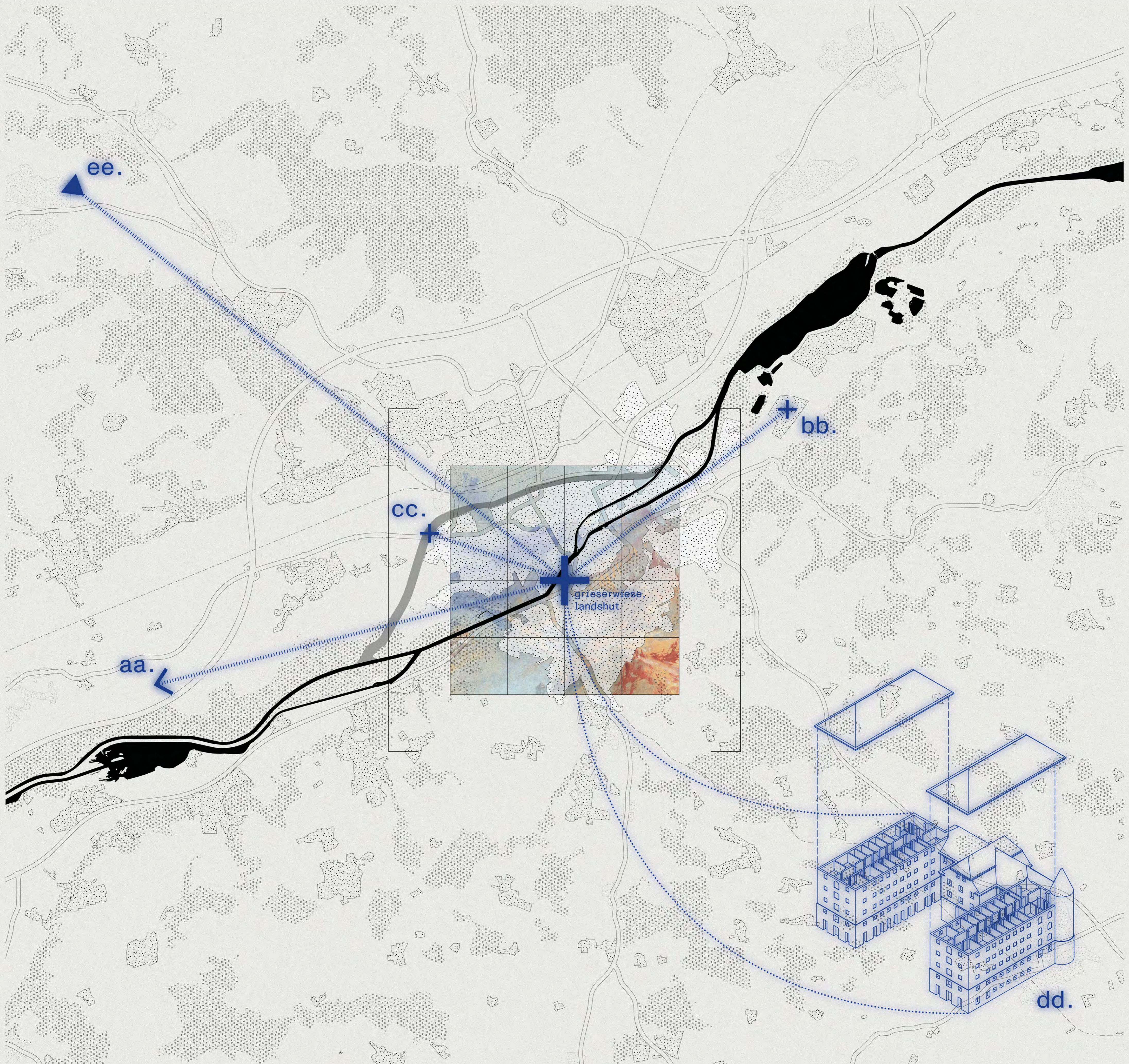
- aa. 1hr. by car to Munich, 30min. by car to Munich Airport
1hr. to Isar Valley (silicon valley of Bavaria)
- bb. University of Applied Sciences Landshut (technology & business) and location of LINK startup hub
- cc. 'Flutmulde' provides safety measure to prevent extreme flooding. Safety necessity due to future increase of extreme weather
- dd. Preservation of a prison -- from archiving prisoners to safe-keeping of European cultural data.

ee. 2010

2020

2030 ?

- geographical center of EU shifting towards Landshut



Archive_of_European_Culture



Landshut_DE

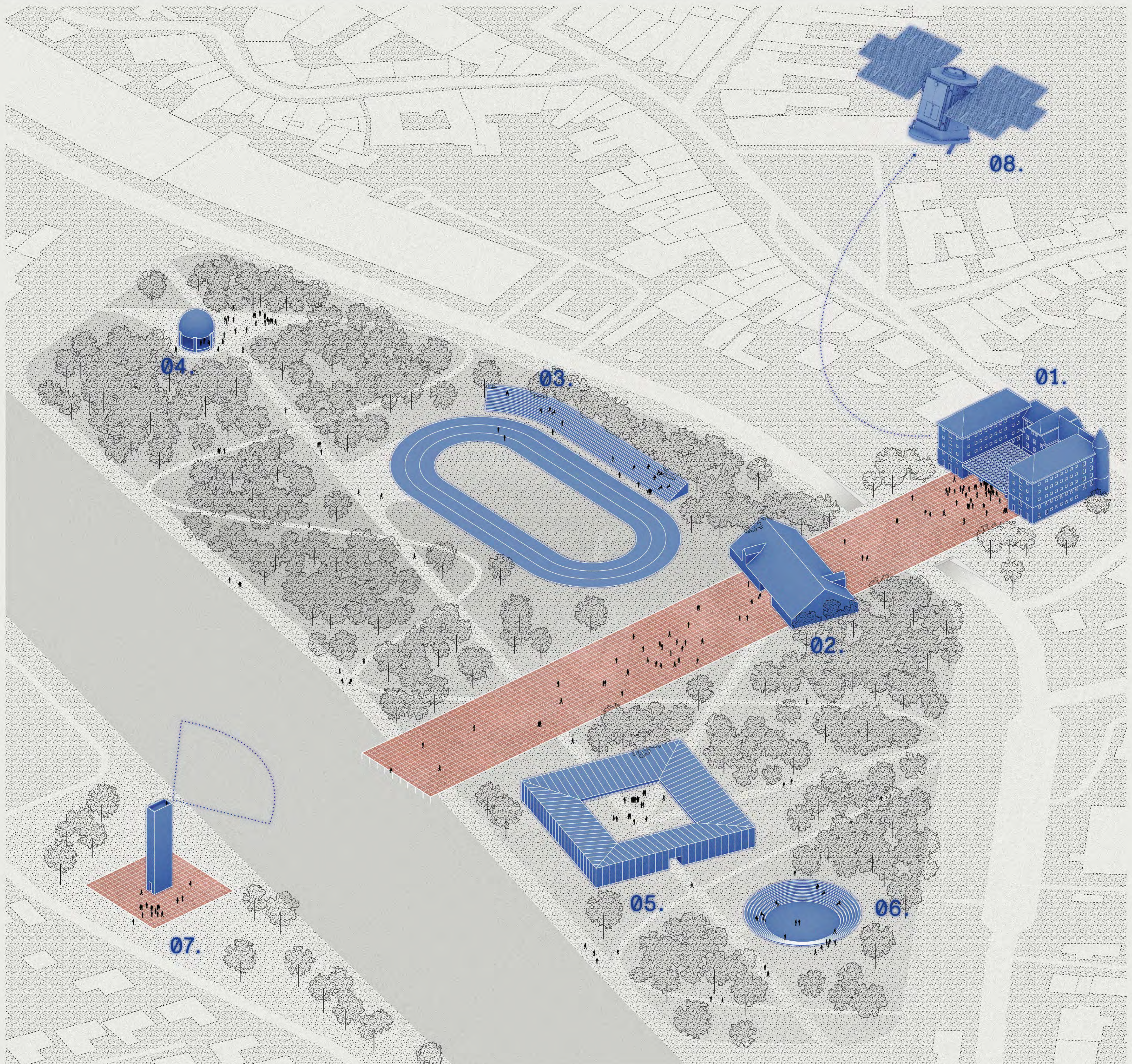


- 01. Forum: former prison reinstated as data-centre; keeping our cultural heritage data safe. Uplink to satellite provides global access for research.
- 02. Workshop: existing 'Zeughaus' used as a space to practice and teach European crafts.
- 03. Arena: Turnierplatz upgraded with permanent track and stadium seats to accommodate various sports events.
- 04. Stage: pavilion reused as small concert stage for small romantic gatherings.
- 05. Food court: to learn about and enjoy various European cuisines. Centre courtyard to be used for markets and for restaurant tables.
- 06. Theatre: for larger performances and open-air concerts. Used throughout the year both spontaneously and organised.
- 07. Monument: celebrating the EU. The watchtower provides an overview of the park. Can be used for light shows etc.
- 08. Uplink: the data stored in the archive can be accessed by all citizens of the EU.

Section of the Forum, the former prison and the Wittstraße



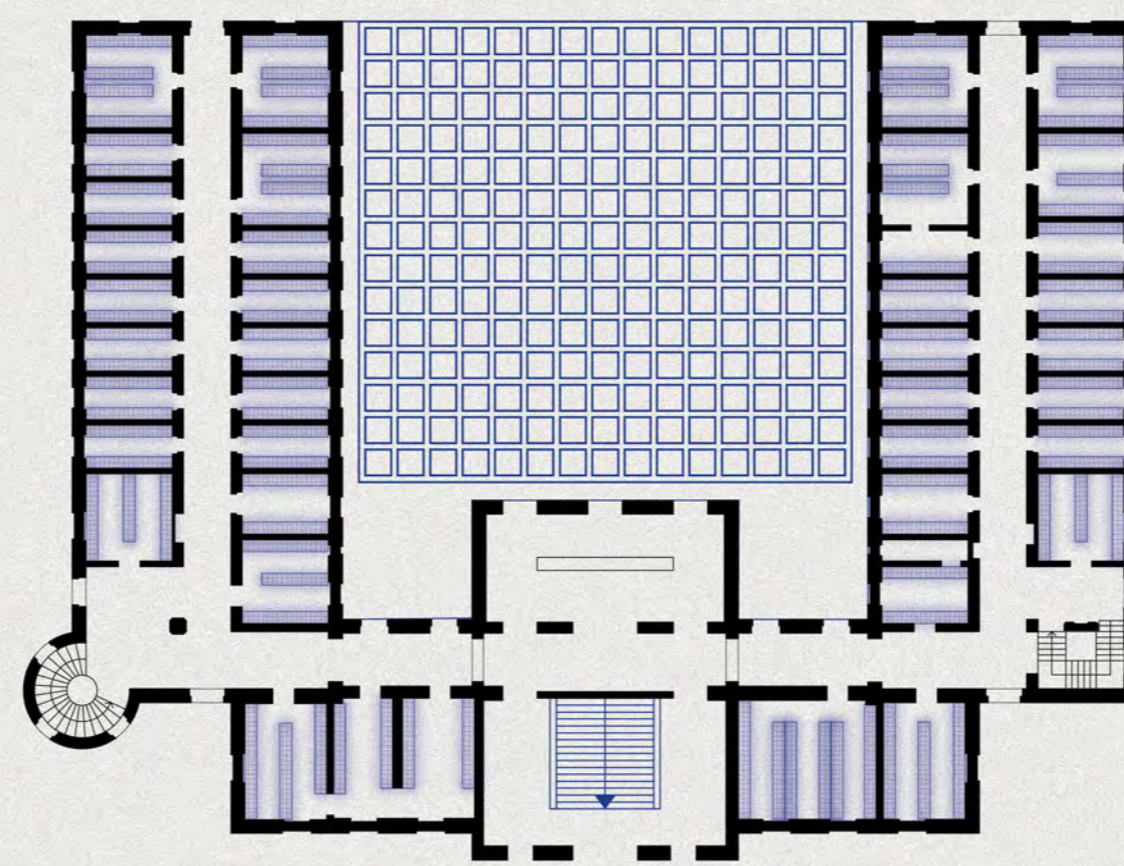
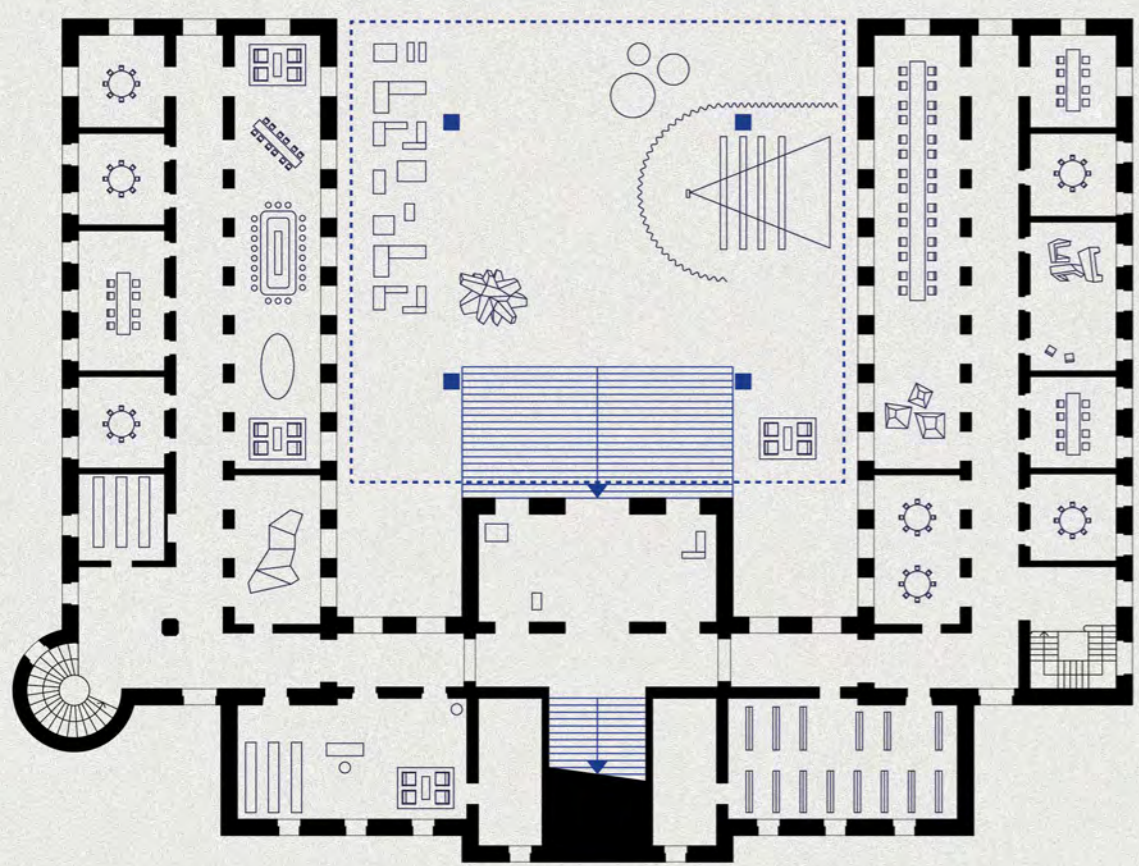
1:250 on A1





FP.01 - Public forum

FP.02 - Servers for data storage



1:350 on A1

